



# Alzheimers NZ Annual Report 2016



# About Alzheimers NZ

## Our vision

**Towards a world without dementia**

*Kia mate wareware kore te ao*

## Our mission

**A dementia-friendly New Zealand**

*Aotearoa, he aro nui ki te hunga mate wareware*

---

## What we do

Alzheimers New Zealand is the country's leading voice on all issues associated with dementia and supporting people affected by the condition.

We advocate nationally to ensure government, and the country as a whole, is aware of the issues surrounding dementia – and the solutions. A core goal is to improve services for people living with dementia by creating a dementia-friendly New Zealand.

We also raise awareness of dementia, provide information and resources for people living with and affected by dementia and promote research about prevention, treatment, cure and the care and support of people affected by dementia.

We support a community of local Alzheimers organisations throughout New Zealand, each of which is a Member of Alzheimers NZ. Local Alzheimers organisations provide support, education, information and related services directly to members of their communities who are affected by dementia.

These services may include:

- Information and education to assist with understanding and living with a dementia diagnosis
- Support for family, friends and whanāu coping with the demands of caring
- Support groups and a range of activity and programmes for people affected by dementia.

# Contents

<b>What we do</b>	<b>2</b>
<b>Chair and Chief Executive's report</b>	<b>4</b>
<b>Our strategy: A dementia-friendly New Zealand</b>	<b>6</b>
<b>Theme 1: Influencing</b>	<b>8</b>
Dementia-friendly recognition programme	8
Advocacy	9
Raising awareness and tackling the stigma associated with dementia	11
Information for people living with dementia	16
Partnerships and collaboration	17
<b>Theme 2: Strengthening</b>	<b>22</b>
<b>Financials</b>	<b>27</b>
<b>Our team</b>	<b>45</b>
<b>Thank you</b>	<b>47</b>

This document has been produced in a dementia-friendly style. It uses fonts and spacing that makes it as easy as possible for people with dementia to read.

# Chair and Chief Executive's report



**Wow! What a year. Alzheimers NZ achieved numerous standout successes and reached new milestones in 2016, of which we can all be proud.**

From our standpoint, both Alzheimers NZ and our Members can be very satisfied that, as a collective, we are making a significant difference and that we are on track with our goals to better support people living with dementia.

For a start, to support our commitment to the creation of a dementia-friendly New Zealand we at Alzheimers NZ have significantly geared-up our advocacy capability so we can be even more effective at encouraging politicians and policymakers to provide appropriate support for people affected by dementia.

We need all political parties to champion the policy initiatives we feel are needed, and we are preparing to convince them of that in 2017.

As part of this goal, we are also working with organisations with similar goals, for example the Office for Seniors, and Rotorua Lakes Council, to ensure our message and concerns are as widely understood and appreciated as possible.

We are pleased to report that our stakeholder engagement initiatives are assisting us to generate valuable traction

with a range of organisations that can add weight to our calls for action.

2016 also saw us launch the very successful pilot of our dementia-friendly recognition programme. This was well received and is now ready for full scale promotion in 2017. We are looking forward to putting this in place.

A strong sign that our collective organisation is well regarded is the huge support that was received when thousands of people attended the Memory Walks held across New Zealand. This was an amazing turnout given the terrible weather, and the range of other awareness events that were held during World Alzheimers Month and throughout the year. It was very humbling to see the level of support our wider organisation has within local communities.

On more of a governance note, Alzheimers NZ and its Members adopted a new constitution, based on upcoming

legislation and designed to take our wider organisation into the future. New priorities were adopted and there was a strong focus on strengthening Alzheimers NZ and bringing Members together.

This was a very important piece of work and we are very excited about how it will enhance our organisation and enable us all, as a collective, to be even more effective advocates for people living with dementia.

It was therefore unfortunate that five local Alzheimers organisations resigned their membership of Alzheimers NZ. We appreciate and accept that there are sometimes differences of opinion within our community, but Alzheimers NZ and its Members have a single focus on supporting people living with dementia. We are stronger together, but we are also committed to continuing to work proactively and constructively with all parties to make sure our goals are achieved.

We ended the year by hosting what feedback suggests was one of the best conferences to be held in our sector. Our hugely successful biannual conference, which was also the 19th Asia Pacific Regional Conference for our international body *Alzheimer's Disease International*, was extremely well attended. Just as important as the attendee numbers, though, was the strong contribution by

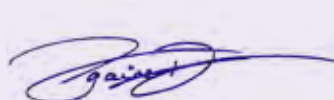
people living with dementia and their care partners. They participated as speakers and made up an unprecedented 20 percent of conference delegates.

At an international level, we are pleased the impact of dementia is being recognised. The World Health Organization is developing a global action plan on the public health response to dementia, and Alzheimers NZ is very supportive of it. This plan is going to be launched in 2017 and we are looking forward to the added impetus we will get from the WHO's work.

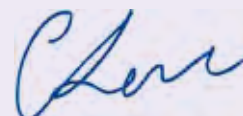
Lastly, a huge thank you to the Board and the team of Alzheimers NZ, to our volunteers in the Alzheimers NZ office and throughout the country for their hard work and dedication, and to everyone who contributes to what we do and the successes we have achieved.

Alzheimers NZ is committed to standing up for the needs of people living with dementia, and building a dementia-friendly New Zealand. It's a team effort!

Let's all continue to work together to make that dream a reality.



Ngaire Dixon  
Chair, Alzheimers NZ



Catherine Hall  
Chief Executive,  
Alzheimers NZ

# Our strategy: A dementia-friendly New Zealand

**Wouldn't it be great to know that as we age, we can look forward to living in a New Zealand where we are valued, where we have the opportunity to contribute and participate, and where we feel safe – whatever our disabilities or frailties?**

Alzheimers NZ is focused on achieving just that. As a national organisation, we have the strength in numbers, the knowledge and experience - and the mana - to actually make a difference and to achieve our goal: An inclusive and dementia-friendly New Zealand.

Most people with dementia live in our communities. They shop, work, eat out, catch the bus, go to the library and do everything else we all enjoy doing.

Dementia is already one of our most significant healthcare and social service challenges, and with an ageing population the number of people with dementia is expected to rise dramatically. It makes sense to talk about how we can turn our communities into inclusive places, where people with dementia can live well for as long as possible.

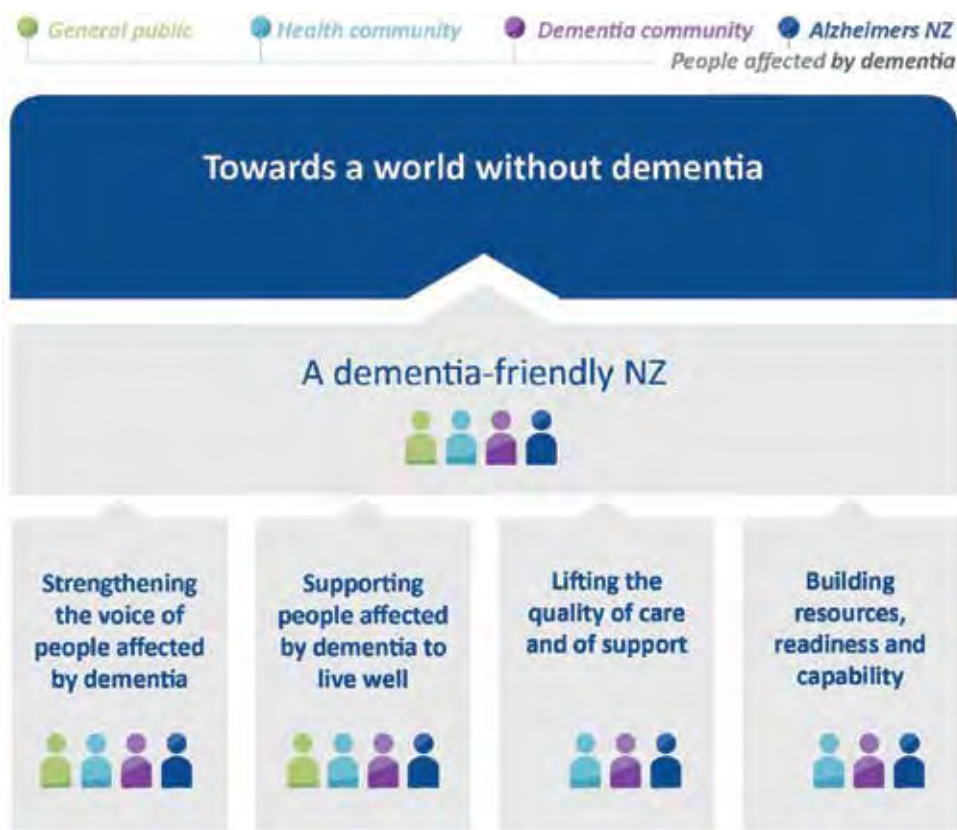
This is why we made a dementia-friendly New Zealand our strategy for the next 10 years, and the shared mission of Alzheimers NZ and its members.

In 2016, our efforts were focused on working towards a dementia-friendly New Zealand, and doing more and better for people with and affected by dementia, in two key areas:

- **Influencing** decision-makers to inspire and shape external change and lift the level and quality of support and care available for people with and affected by dementia; and
- **Strengthening** the collective of Alzheimers NZ and its Members so we can be even more successful in supporting one another and working collaboratively to achieve our shared mission: *A dementia-friendly New Zealand*.

**Sustaining** Alzheimers NZ as a successful and healthy organisation also remained a major focus area.





A dementia-friendly New Zealand is one in which:

- People with dementia have a strong voice and feel confident contributing to and participating in their community
- People with dementia and their family/whānau are living well and safely, and are receiving the information and support they need
- Communities accept and include, and understand, people with dementia
- Every person is recognised and respected for their unique backgrounds and beliefs
- Health and social services are strong and sustainable, with adequate resources to respond effectively to people with dementia
- We work collaboratively to achieve an optimal balance between service providers and support from within the community, and between the perspectives of those living with dementia, and those who provide the support and care.

# Theme 1: Influencing

As New Zealand's leading national voice on issues relating to dementia, we have continued our work on influencing decision-makers to inspire and shape external change and lift the quality of support and care available for people affected by dementia.

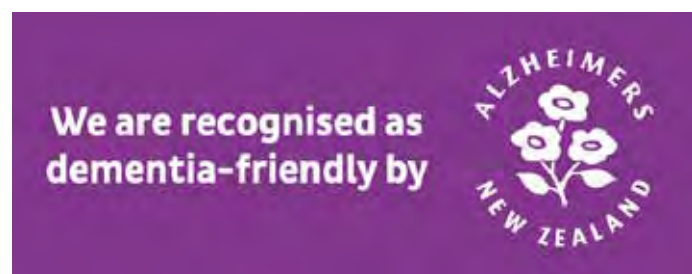
## Dementia-friendly recognition programme

**Businesses and organisations are an important part of our communities and we are working closely with them to achieve a dementia-friendly New Zealand.**

A dementia-friendly business or organisation means that staff and owners learn about dementia and are committed to making tangible changes to create a positive and inclusive environment for people with dementia. Any business or organisation in the community can become dementia-friendly, be it a café, library, bank or shop.

In 2016, Alzheimers NZ ran a successful pilot of the programme, and two businesses, Westpac and BUPA, have now been awarded dementia-friendly status. Alzheimers NZ is working with a third business, and is going to launch and roll out the full recognition programme in 2017.

Alzheimers NZ will also develop a Dementia Friends programme in 2017. Becoming a Dementia Friend involves individuals undertaking some basic education about dementia and then committing to taking some action to help raise awareness and minimise stigma within their local community. The action taken can be as big or small as the individual wants; the important thing is turning their understanding of dementia into action.





## Influencing decision makers

**As the country's longest standing and largest advocate on dementia issues, we have argued strongly that the type and quality of services people with dementia receive must improve.**

The 2016 World Alzheimer Report was launched to the media in September. It was entitled *Improving healthcare for people living with dementia – Coverage, quality and costs now and in the future*.

This comprehensive report warns that countries like New Zealand are unprepared for the expected increase in the number of people with dementia.

Alzheimers NZ's message is very clear and unequivocal - New Zealand needs to action the National Dementia Framework. If we don't, New Zealand will continue to struggle meeting the needs of a growing number of people with dementia. And this will have major personal, societal and fiscal implications.

We took the lead on this issue in November by recommending to government ways in which New Zealand can improve support for people diagnosed with dementia and reduce costs.

# Theme 1: Influencing

## Influencing decision makers

### Alzheimers NZ proposals to government

Alzheimers NZ wants 12 months of guaranteed post diagnostic support for each person diagnosed with dementia. That's about 14,000 people each year.

The money would go towards a raft of initiatives, chief among them providing better in-home care and support, and information services.

The organisation also wants the government to implement the Navigator role as a priority. This is a designated person in the care team for a person with dementia and is their first point of contact. The Navigator role is already part of government policy; government has not yet implemented it and Alzheimers NZ is keeping pressure on the government to do so.

Alzheimers NZ's proposals will

- increase quality of life for people with dementia, and their carers
- increase the length of time people with dementia can continue to live at home.
- Government would also enjoy:
- reduced costs in terms of providing long-term residential care for people with the condition

- reduced costs because there'd be fewer unnecessary hospital admissions that arise from the need for crisis intervention.

We also made a number of submissions, for example on the Ministry of Health's discussion paper on the Health of Older People Strategy, now called Healthy Ageing Strategy, and on Labour MP Maryan Street's 'End of Life Choice' bill. In addition, we provided advice to government on options for Budget 2017.

For 2017, we are looking forward to being involved in the implementation planning of the Ministry of Health's new Healthy Ageing Strategy. The World Health Organization (WHO) will adopt a global action plan for dementia at the World Health Assembly in May 2017. As the lead agency in New Zealand, Alzheimers NZ contributed to Alzheimers Disease International's submission on this plan which, once adopted, will mean all Member states, including New Zealand, must report on their progress implementing the plan's goals.

## Thinking Dementia

**In 2016, Alzheimers NZ published the first three issues of Thinking Dementia, an email newsletter on recent research and policy developments.**

It is full of links and articles focusing on the social context of dementia, and has been met with huge interest from the dementia sector.

## Raising awareness and tackling the stigma associated with dementia

### World Alzheimer's Month

**World Alzheimer's Month has become a regular fixture in Alzheimers NZ's calendar.**

Again, Alzheimers NZ and local Alzheimers organisations put together an impressive calendar of events across New Zealand for September.

Champion for Dementia, Colin Mathura-Jeffree, officially opened World Alzheimer's Month in Auckland when he switched on the spectacular light sculpture Affinity. Affinity was on display at Aotea Square for two weeks and allowed viewers to visualise the significant effects dementia has on thoughts and memories. Passers-by enjoyed playing with the sculpture and listening to personal stories of people with dementia. Affinity was created by

Australian design team, Amigo and Amigo, who aim to raise awareness of Alzheimers disease in an engaging way.

Many local Alzheimers organisations hosted community events with scientists from Brain Research New Zealand. Speakers included some of New Zealand's foremost experts in neurodegenerative diseases of the ageing brain, for example Ngaire Kerse, Maurice Curtis and Lynette Tippet.



# Theme 1: Influencing

## Memory Walks

**Rain and cold weather across the country didn't stop thousands of New Zealanders from hitting the streets for Memory Walks on the weekend of 17 and 18 September 2016.**

This year over 2,500 people, wearing their purple Memory Walk shirts, came to 21 walks from Kaitaia to Invercargill. Many came to remember family members and friends with dementia, and to show their support for a more dementia-friendly New Zealand.

Champion for Dementia, Reuben Thorne, was at the Timaru Memory Walk, while fellow Champion, Kerry Prendergast, and New Zealand's former Sale of the Century television presenter, Steve Parr, joined the Memory Walk in Wellington.





## A new Champion for Dementia

Kate De Goldi is a well-known and award winning short story writer, an author of young adult fiction, a children's book author and a writer of journalism pieces.

She is now also a Champion for Dementia.

Her 2012 novel, *The ACB with Honora Lee*, explores the relationship between a young girl, Perry, and her cranky grandmother who has dementia and lives in a rest home. Kate's experience with dementia comes through her mother who started showing signs of memory loss in her early seventies.

Through her association with Alzheimers NZ, Kate is looking to honour the experience she had with her Mum and Dad and help raise public awareness of dementia. Kate joins Kerry Prendergast, Colin Mathura-Jeffree and Reuben Thorne, who are already supporting Alzheimers NZ's awareness raising activities as Champions for Dementia.





# Theme 1: Influencing



## Kate De Goldi's story

Our family's experience of Alzheimers began when our mother started showing signs of memory loss in her early seventies. As her dementia worsened over the next few years a heavy burden of care fell on our Dad, and on my sisters who both lived in Christchurch. It was a very difficult and sad time – and made even more so when we started to suspect that Dad, too, had dementia.

Interestingly, we had, in a sense, been made ready for our parents' dementia by our experience with our maternal grandmother years before when she had lived with us. In dealing with Mum and Dad my sisters and I called on our vivid memories of Mum's patience with her mother, her instinctive ability to play along with Nanny's confabulations and repetitions, her great sensitivity and patience. We felt that Mum had, in a way, taught us how to be with her in her own strange, altered reality.

In the period before Mum went into care we sought and were given great help by Alzheimers Canterbury. It was enormously reassuring to know that here was a group of people who had seen it all before, who could acknowledge our difficulties and sadness but give practical advice as to every stage of the dementia trajectory. We were also greatly supported and uplifted by the loving care and attention Mum received when she was in care. Her new

home became a new home for us, too – and her fellow residents, their families and the extraordinary caregivers were a new community that touched our lives in marvelous ways. It was just like this, too, when we went down the same road all over again with Dad a year or so later.

Both our parents have died now. It is good to know that their struggle is over, though we miss them very much. But the legacy of their experience with Alzheimers is profound for myself and my sisters. We learned so much amidst all the sorrow. The big takeaway for me is this: though I may have felt that Mum and Dad were lost to me it does not mean they were not there. Though they may not have known who I was, or indeed who they were, they existed still, they were themselves. Though their lives were different and difficult by our measure it did not mean that they had no quality of life. It was incumbent on us to think more imaginatively about what their lives and selves had become and to see their humanity beneath the altered body and personality.

I feel very lucky to have the opportunity to work with Alzheimers New Zealand, to honour in a way the priceless experience I had with Mum and Dad. I look forward very much to helping raise public awareness of dementia and the work of this excellent organisation.

Kate De Goldi



## About Dementia campaign

We encouraged New Zealanders to “get their heads around dementia” in the last chapter of our About Dementia awareness campaign.

This part of our campaign featured an educational video and videos of six New Zealanders talking about how their lives have been affected by dementia. The videos attracted close to half a million viewers and many kind and heartfelt comments and discussions.



# Theme 1: Influencing

## Information for people living with dementia

We have added five more booklets to our popular and well-read guide *About Dementia*. These new booklets cover many questions asked by people living with, and affected by, dementia.

These booklets are a comprehensive resource specifically tailored for a New Zealand audience. They are based on the latest insights and research and are available on our website [www.alzheimers.org.nz](http://www.alzheimers.org.nz) or from local Alzheimers organisations. These are the titles:

- About dementia: a guide for people with dementia and their family/whānau
- Living well with dementia: a guide for people diagnosed with dementia
- Supporting a person with dementia: a guide for family/whānau and friends
- Understanding changed behaviour
- Transitioning into residential care
- The later stages of dementia and end of life care.

## New resources added to popular Alzheimers NZ website

The Alzheimers NZ website is often the first point of contact for people who have recently been diagnosed with dementia and people keen to find out more about the condition.

In 2016, we added many new resources to the site, including the information booklets, the suite of personal videos and the educational video from the *About Dementia* campaign.





## Partnerships and collaboration a key theme for Alzheimers NZ

Partnerships and collaborations within the dementia sector remained a priority in 2016.



## Alzheimers NZ 2016 Biannual Conference a major success

The Alzheimers NZ 2016 Biannual Conference in November brought delegates from New Zealand and overseas to Wellington.

It was also Alzheimer's Disease International's 19th Asia Pacific Regional Conference and many of our colleagues from all over the Asia Pacific Region came. This is only the second time that Alzheimers NZ has hosted an ADI conference. The first was the 17th International Conference of ADI in Christchurch in 2001.

Earlier in the year, a small delegation took part in the ADI International Conference in Budapest.

# Theme 1: Influencing

## Dementia Today: Diverse Communities, Collective Action

The Alzheimers NZ 2016 Biannual Conference and Alzheimer's Disease International's 19th Asia Pacific Regional Conference had a lot to offer for the 370 participants from New Zealand and overseas: vibrant keynotes, inspiring workshops and plenty of opportunities for the dementia sector to get together and network.

And it didn't disappoint. Delegates from around the country and from overseas came together over three days to share information, network, hear about new developments in research, diagnosis, prevention, support services and treatment options.

We received glowing feedback from participants and speakers about all aspects

of the conference, especially the great quality of speakers, the programme itself and how well the event was organised.

In a world first, 20 percent of registrations were from people living with dementia and their care partners, and those participants, as well as keynote speakers and presenters living with dementia, made sure the voices of people with dementia were heard. Alzheimers NZ was able to provide free registrations to people with dementia thanks to a generous donation from the Freemasons Foundation.

Major themes emerging from the conference were human rights and quality of life for people with dementia, which will be an inspiration for our advocacy work.

### Thank you to our sponsors

Platinum sponsor



Gold sponsor



Principal Partner  
Dementia Delegates



Silver sponsors



Sponsor



Partner



Partner  
Dementia Delegates



The Ponsonby Lodge No 34



***“ I have been to many conferences both nationally and internationally and I can honestly say that this conference was one of the best. ”***

*Wendy Fleming, Alzheimers NZ Charitable Trust Chair,  
ADI Honorary Vice Chair and Alzheimers NZ Life Member*



***“ Congratulations for a great conference and great learning for the participants. ”***

*Theresa Lee, Executive Director, Alzheimer's  
Disease Association Singapore*



***“ What an amazing conference! There was not only great info and great inclusion, but so much positivity and hope! ”***

*Al Power, University of  
Rochester, New York*



# Theme 1: Influencing

## Alzheimers University and Asia Pacific Business Meeting

**Leading up to our conference, ADI held two events in Wellington with the support of Alzheimers NZ.**

Alzheimers University is a series of workshops for national Alzheimers organisations. This year the University focused on advocacy activities and we were delighted to be joined by 15 colleagues from the Asia Pacific Region and Julie Butler from Alzheimers Otago.

We were also joined by Leitumai Malaulau from Samoa who is in the process of setting up an Association in that country – Catherine has been working with Mai as part of her role as an ADI Ambassador for the South Pacific.

Also ahead of the conference, ADI Members from all over the Asia Pacific Region met in Wellington for their Annual Business Meeting. They updated each other on their work, including dementia-friendly initiatives and activities for World Alzheimers Month. A train-the-trainer programme for low and middle income countries was also discussed.



## Forming new partnerships in New Zealand

**This year we have broadened our relationships with other organisations, and are part of several new initiatives.**

We have been working closely with the Office for Seniors in the Ministry for Social Development on our shared goal of age and dementia-friendly cities.

In February, Alzheimers NZ and the Office for Seniors co-hosted a public forum discussing what an age and dementia-friendly future would look like.

In May, Rotorua Lakes Council held a public forum, again with Alzheimers NZ and the Office for Seniors, but also representatives from BUPA, Westpac and of course Alzheimers Rotorua. About 100 people came to what may have been the first discussion about planning a dementia-friendly community in New Zealand.

Becoming New Zealand's first dementia-friendly community is now a real part of Rotorua Lakes Council's strategy to build a resilient community. Alzheimers NZ Chief Executive, Catherine Hall, and Alzheimers Rotorua Manager, Elaine Fox, are both on the steering group for this project. One of the first tasks for the group is to establish priorities for action for people living with dementia in Rotorua.

In September, Alzheimers NZ, Carers NZ and the New Zealand Dementia Cooperative jointly published the report from the successful New Zealand Dementia Summit, which we held in 2015.

## Theme 2: Strengthening

**As a collective, Alzheimers NZ and its Members have a shared vision of, and a commitment to, creating a dementia-friendly New Zealand.**

Achieving that goal requires us all to work collaboratively and closely – we are stronger as a ‘team’ and will have more success encouraging influencers and policymakers to implement the policy proposals that we know will benefit people living with dementia.

As part of strengthening our wider organisation, Alzheimers NZ adopted a new constitution at our Annual General Meeting in June 2016. The constitution reflects the forthcoming legislation changes for incorporated societies.

At the same time, two specific projects, Services and Standards, and Shared Revenue Generation, were put on hold. The Services and Standards initiative was established to identify a minimum set of services and associated standards to be provided consistently across all local Alzheimers organisations. The Shared Revenue Generation project is there to develop a national funding framework with mechanism for fair and sustainable revenue generation. Both projects recommenced in December 2016 to be completed in 2017.

Alzheimers Partners, our donor programme, went from strength to strength. A detailed review in the second half of 2016 proved that Alzheimers Partners was successful and is now sustainable. The partnership will be closed early in 2017 and a new National Donor Programme will be established in its place.

While these initiatives have strengthened the whole Alzheimers NZ collective, as mentioned in the joint Chair and CEO’s report, five local Alzheimers organisations resigned their membership of Alzheimers NZ. By the end of 2016 Alzheimers NZ had 16 Members.

Our goal of continuing to strengthen the organisation and to work collaboratively remains unchanged, as does our desire to form strong relationships with former members.



## Member updates

### Alzheimers Gisborne under new management

Alzheimers Gisborne changed managers in mid-2016, the previous manager having been on staff for 15 years. New manager, Janet Willson, is keen to raise the profile of Alzheimers Gisborne in the local community and to initiate plans for future services that will be required as the dementia population grows. New services will require more resources than are available at present – Alzheimers Gisborne has four paid part time staff; a manager, a community coordinator, and a daycentre supervisor and assistant.

### Alzheimers Manawatu – keeping a high standard

Alzheimers Manawatu has worked hard to maintain its high standard of service in 2016. Now incorporating Cognitive Stimulation Therapy into all four day programmes throughout the Manawatu, two staff members competed the qualification in diversional therapy, while other staff received certificates in core competencies in Health, Disability, and Aged Support.

The team secured funding for running an art group for three years, which has been taken up with great enthusiasm.



*New arts programme at Alzheimers Manawatu*



## Theme 2: Strengthening

### **Alzheimers Northland – award winners**

In November 2016, Alzheimers Northland received the Judges Choice Award at the 2016 Northland Westpac Business Awards, a great recognition of their work.



*Alzheimers Northland Board Members and staff receiving the award: left to right Aleisha Dobson, Beth Kelly, Jeannie Tindall, Annie Everson-Dawn and Stuart Spicer*

### **Alzheimers Otago – founding member of the Neuro Group**

Alzheimers Otago, along with other organisations interested in brain health, has formed a group to work together across the Otago community providing education and raising awareness. Other organisations in the group are Brain Injury Association Otago, Epilepsy Otago, Stroke Foundation, MS Otago and the University of Otago Brain Health Research Centre.

The Neuro Group has hosted forums across Otago and hosted a 12-episode radio show on Otago Access Radio. Both the forums and the radio show enabled us all to reach more of the community than if we had embarked on this initiative alone.

Speakers have generously donated their time and energy, and feedback has been extremely positive.



*2nd from left: Julie Butler, Alzheimers Otago Manager, at the Otago Access Radio studios with other Headspace presenters*

## **Alzheimers Rotorua looking forward to having dementia-friendly city**

Alzheimers Rotorua is working with Alzheimers NZ, Rotorua Lakes Council and BUPA on making Rotorua a dementia-friendly community, along with other interested parties in a working group.

The team completed a second Cognitive Stimulation Therapy programme for people in early stage dementia, and the Living with Memory Loss Programmes for Carers continue to be well supported.

## **Alzheimers Southland – New programme**

Last year Alzheimers Southland ran a pilot Cognitive Stimulation Therapy programme. Because of the success of the pilot, the programme has been booked to run continuously during 2017. In short, Cognitive Stimulation Therapy programme is a seven week programme of themed activities in a small group led by trained Education Advisor, Dr Sabahat Matin. Each of the sessions covers a different topic and is designed to improve the memory and mental abilities of someone with dementia.

Alzheimers Southland is also going to start a Cognitive Stimulation Therapy Maintenance programme, i.e., a follow up programme for the participants of the first programme and this will also be continuously run over the year.

## Theme 2: Strengthening

### **Alzheimers Taranaki – Introducing Alz Café**

Alzheimers Taranaki has introduced new monthly coffee groups in New Plymouth and Hawera. The coffee groups are a way for anyone affected by dementia and their carers to meet with others for a cuppa and a chat. This is a chance to socialise in a supportive group and make new friends with people who understand how things can change when dementia becomes part of your life.

Alz Café is possible courtesy of both the Tea House on the Lake at Pukekura Park and Gelato Caffè in Hawera. Thank you for being so supportive, making the team feel welcome and being dementia-friendly.



*Tea House on the Lake, Pukekura Park. L to R Ana Parkes, Manager Alzheimers Taranaki, Corrie Paice, Manager Tea House on the Lake & Delwyn Wallace Field Worker Alzheimers Taranaki*





## **Alzheimers New Zealand Incorporated**

### **Entity Information**

### **For the year ended 31 December 2016**

#### **Legal name of entity**

Alzheimers New Zealand Incorporated (Alzheimers NZ)

#### **Type of entity and legal basis**

Incorporated as a Charitable Trust under the Charitable Trusts Act 1957

Registered as a Charity (registration number CC21026) under the Charities Act 2005

#### **Entity's purpose or mission statement**

Alzheimers NZ is a not-for-profit organisation that works nationally to support people in New Zealand who are living with or affected by dementia.

We also support local Alzheimers organisations, our Members, who provide services at a community level, engaging directly with people with dementia and their supporters, family /whanau.

#### **Entity structure & governance**

Alzheimers NZ is governed by 8 Board members

#### **Board Members**

Ngaire Dixon, Chair (Chair since September 2016)

Susan Hitchiner, Chair (until September 2016)

Mary Slater, Vice-Chair (since June 2016)

Wayne Fletcher, Vice-Chair (since August 2016)

Jan White (Vice-Chair until June 2016)

Brenda Wraight (since December 2016)

Dave Paddon

Dianne Johnson (until October 2016)

Dianne Stokes

Emma Thompson (until May 2016)

Karen Foster (until June 2016)

Liam Butler (until May 2016)

Lyneta Russell (since August 2016)

#### **Main sources of cash & resources**

Alzheimers NZ receives cash or resources from:

- \* Grants from various organisations
- \* Donations and Bequests from individuals and organisations
- \* Contracts
- \* Conference surplus
- \* Membership Fees

#### **Main methods used by the entity to raise funds**

Alzheimers NZ applies for grants from various organisations, is involved in a donor programme with members, and receives a membership levy from member organisations.

#### **The entity's reliance on volunteers and donated goods or services**

The Board members are all volunteers and there is a small pool of volunteers who support the work of Alzheimers NZ.

Alzheimers NZ does not receive donated goods.



## Alzheimers New Zealand Incorporated Entity Information For the year ended 31 December 2016

### Additional information

Independent Auditor	Moore Stephens Wellington Audit Wellington
Banker	Bank of New Zealand Kiwibank

### Contact information

Registered Office	Level 4, West Block, Education House, 178-182 Willis Street Wellington
Postal Address	PO Box 11-288, Manners Street, Wellington 6142
Website	<a href="http://www.alzheimers.org.nz">www.alzheimers.org.nz</a>
Facebook	<a href="https://www.facebook.com">www.facebook.com</a>
Phone	(04) 387 8264
Fax	(04) 387 9682



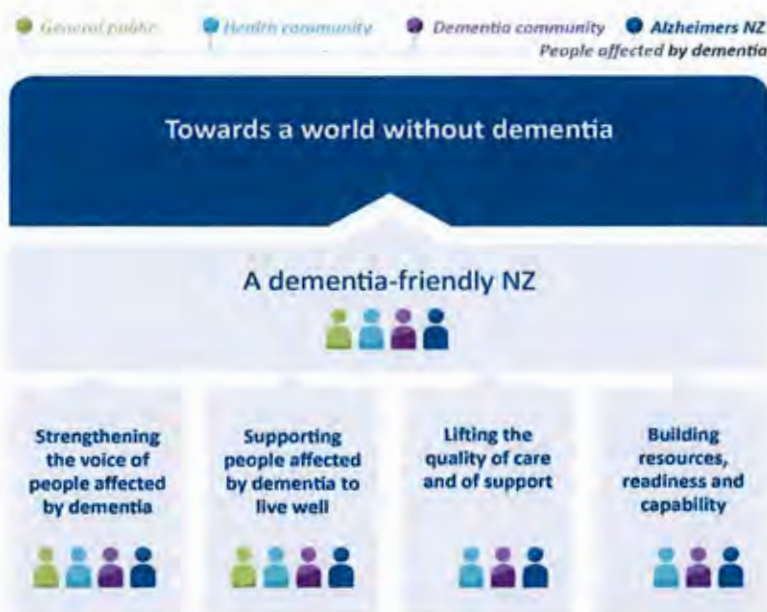
# Alzheimers New Zealand Incorporated

## Statement of Service Performance

### For the year ended 31 December 2016

#### Description of the entity's outcomes

Alzheimers NZ's vision is a world without dementia. Our strategy to achieve this vision focuses on achieving a dementia-friendly New Zealand:



A dementia-friendly New Zealand is one in which people with dementia are valued, can participate in and contribute to their families and communities, and where they feel safe.

We work to achieve a dementia-friendly NZ in three broad areas:

- **Influencing** decision-makers to inspire and shape external change and lift the level and quality of support and care available for people with and affected by dementia
- **Strengthening** the collective of Alzheimers NZ and Members so all organisations are successful and working collaboratively to achieve our shared mission: *A dementia friendly New Zealand*
- **Sustaining** Alzheimers NZ as a successful and healthy organisation.

#### Outputs

INDICATORS OF SUCCESS IN:	Actual 2016	Actual 2015
Dementia-friendly – organisations awarded dementia-friendly status	2	0
Awareness raising – proportion of New Zealanders who know a lot or a fair bit about dementia[1]	General Population 61% Maori 43%	General Population 51% Maori 43%
Consumer Advisory Groups are operating for people with dementia and for family/whānau	2 meetings held	4 meetings held
Our digital and social media are successful platforms for our engagement with our community and stakeholders	Website visits: 120,566 Social Media: 14,199	Website visits: 96,485 Social Media: 13,179
Information resources – volume printed	14,400	8,000

[1] Source – Awareness and Understanding of Dementia 2016



# **Alzheimers New Zealand Incorporated** **Statement of Financial Performance** **For the year ended 31 December 2016**

	Note	2016	2015
<b>Revenue</b>			
Donations, fundraising and other similar revenue	1	579,056	52,925
Fees, subscriptions and other revenue from members	1	89,409	50,000
Revenue from providing goods or services	1	1,185,041	1,072,514
Interest, dividends and other investment revenue	1	35,389	48,252
Other revenue	1	21,483	83,185
<b>Total Revenue</b>		<b>1,910,378</b>	<b>1,306,876</b>
<b>Expenses</b>			
Expenses related to public fundraising	2	42,351	44,637
Volunteer and employee related costs	2	401,683	368,563
Costs related to providing goods or services		827,827	778,753
Grants and donations made		1,500	3,000
Other expenses		8,605	4,675
<b>Total Expenses</b>		<b>1,281,966</b>	<b>1,199,628</b>
<b>Surplus/(Deficit) including Reserves</b>		<b>628,412</b>	<b>107,248</b>
Less Alzheimers Partners Surplus	7	30,291	23,794
Less NZ Dementia Co-operative Surplus/(Deficit)	8	(8,808)	54,672
Less Varley Bequest Surplus		417,350	-
Less Oldham Bequest Surplus		15,662	-
Less Unspent Tagged Grants Received		11,709	-
<b>Net Alzheimers New Zealand Incorporated Surplus</b>		<b>162,208</b>	<b>28,782</b>



**Alzheimers New Zealand Incorporated**  
**Statement of Financial Position**  
**As at 31 December 2016**

	Note	2016	2015
<b>Assets</b>			
<b>Current Assets</b>			
Bank accounts and cash	3	355,002	548,797
Debtors and prepayments	3	83,100	82,649
Current Investments	3	960,000	1,257,068
<b>Total Current Assets</b>		<b>1,398,102</b>	<b>1,888,514</b>
<b>Non-Current Assets</b>			
Property, plant and equipment	5	15,953	17,244
<b>Total Non-Current Assets</b>		<b>15,953</b>	<b>17,244</b>
<b>Total Assets</b>		<b>1,414,055</b>	<b>1,905,758</b>
<b>Liabilities</b>			
<b>Current Liabilities</b>			
Creditors and accrued expenses	4	48,162	110,092
Employee costs payable	4	38,763	44,841
Unused donations and grants with conditions	4	80,000	938,130
Alzheimers Partner funds to be distributed	4	140,577	-
Income received in Advance	4	20,000	354,554
<b>Total Current Liabilities</b>		<b>327,502</b>	<b>1,447,617</b>
<b>Total Liabilities</b>		<b>327,502</b>	<b>1,447,617</b>
<b>Total Assets less Total Liabilities (Net Assets)</b>		<b>1,086,553</b>	<b>458,141</b>
<b>Accumulated Funds</b>			
Accumulated surpluses or (deficits)	6	509,918	347,710
Reserves	6	576,635	110,431
<b>Total Accumulated Funds</b>		<b>1,086,553</b>	<b>458,141</b>

Chair

Chief Executive

8<sup>th</sup> APRIL 2017.  
 Date authorised for issue





**Alzheimers New Zealand Incorporated**  
**Statement of Cash Flows**  
**For the year ended 31 December 2016**

	Note	2016	2015
<b>Cash flows from operating activities</b>			
<b>Cash was received from:</b>			
Donations, fundraising and other similar receipts		707,944	325,190
Fees, subscriptions and other receipts from members		166,679	166,574
Receipts from providing goods or services		499,923	1,086,135
Interest, dividends and other investment receipts		35,207	57,915
Net GST		(29,245)	3,805
<b>Cash was applied to:</b>			
Payments to suppliers and employees		1,862,557	1,571,864
Donations or grants paid		1,500	3,000
<b>Net cash flows from operating activities</b>		<b>(483,549)</b>	<b>64,755</b>
<b>Cash flows from investing &amp; financing activities</b>			
<b>Cash was received from:</b>			
Receipts from the sale of investments		297,068	144,960
<b>Cash was applied to:</b>			
Payments to acquire property, plant and equipment		7,314	15,892
<b>Net cash flows from investing &amp; financing activities</b>		<b>289,754</b>	<b>129,068</b>
<b>Net increase/(decrease) in cash</b>		<b>(193,795)</b>	<b>193,823</b>
Opening bank accounts and cash		548,797	354,974
<b>Closing bank accounts and cash</b>		<b>355,002</b>	<b>548,797</b>
<b>This is represented by:</b>			
Bank accounts & Cash	3	355,002	548,797





## Alzheimers New Zealand Incorporated Statement of Accounting Policies For the year ended 31 December 2016

### Basis of preparation

Alzheimers New Zealand Incorporated (Alzheimers NZ) has elected to apply PBE SFR-A (NFP) *Public Benefit Entity Simple Format Reporting - Accrual (Not for profit)* on the basis that it does not have public accountability and has total annual expenses of equal to or less than \$2,000,000. All transactions in the Performance Report are reported using the accrual basis of accounting. The Performance Report is prepared under the assumption that the entity will continue to operate in the foreseeable future.

### GST

All amounts are recorded exclusive of GST, except for Debtors and Creditors which are stated inclusive of GST.

### Specific Accounting Policies

#### Income Tax

Alzheimers NZ is a registered charitable entity under the Charities Act 2005, and accordingly is exempt from income tax under sections CW41 and CW42 of the Income Tax Act 2007.

#### Bank accounts & Cash

Bank accounts & cash in the Statement of Cash Flows comprise cash balances and bank balances (including short term deposits) with original maturities of 90 days or less.

#### Revenue from sale of services

Revenue is recorded based on the stage of completion of the service at balance date.

Donation income is recorded in the period in which it was received.

Grant income that is for specific purposes and refundable if not spent according to the conditions is recognised when the related expenditure is incurred.

Revenue earned from contracts is recognised based on the percentage of completion of the contract.

#### Employee entitlements

Liabilities for wages and salaries and annual leave is recognised as a liability, measured at the amounts expected to be paid when the liabilities are settled.

#### Property, Plant and Equipment

All property, plant and equipment is stated at historical cost less depreciation and impairment.

#### The rates are as follows:

Computer equipment 50%-60% DV

Office Furniture 1% - 67% DV

#### Changes in Accounting Policies

Alzheimers NZ transitioned on 1 January 2016 from preparation of Financial Statements in accordance with Old Generally Accepted Accounting Practice in New Zealand (Old GAAP) to preparation in accordance with Public Benefit Entity Simple Format Reporting-Accrual (Not-for-Profit) (PBE SFR-A (NFPI)). The transition had a significant impact this year, in that Bequest amounts from the Varley, and Oldham estates previously held as income in advance have been recorded as income this year. All other accounting policies were applied consistently during the year.



**Alzheimers New Zealand Incorporated**  
**Notes to the Performance Report**  
**For the year ended 31 December 2016**

Note 1: Analysis of Revenue		Note	2016	2015
Revenue Item	Analysis			
Donations, fundraising and other similar revenue				
	Bequests		477,704	8,338
	Donations		101,352	44,587
	<b>Total</b>		<b>579,056</b>	<b>52,925</b>
Fees, subscriptions and other revenue from members				
	Membership Fee		79,129	50,000
	Alzheimers Partner Contribution		10,280	-
	<b>Total</b>		<b>89,409</b>	<b>50,000</b>
Revenue from providing goods or services				
	Contracts		335,054	539,312
	Conference		217,161	-
	Grants		590,826	533,202
	Sponsorship		42,000	-
	<b>Total</b>		<b>1,185,041</b>	<b>1,072,514</b>
Interest revenue				
	Interest		35,389	48,252
	<b>Total</b>		<b>35,389</b>	<b>48,252</b>
Other Revenue				
	Alzheimers Partners Surplus	7	30,291	23,794
	NZ Dementia Co-operative Surplus/(Deficit)	8	(8,808)	54,672
	Other Revenue		-	4,719
	<b>Total</b>		<b>21,483</b>	<b>83,185</b>

**Alzheimers New Zealand Incorporated**  
**Notes to the Performance Report**  
**For the year ended 31 December 2016**



<b>Note 2: Analysis of Expenses</b>		<b>Note</b>	<b>2016</b>	<b>2015</b>
<b>Expense Item</b>	<b>Analysis</b>			
<b>Expenses related to public fundraising</b>				
	Fundraising Expenses		42,351	44,637
	<b>Total</b>		<b>42,351</b>	<b>44,637</b>
<b>Volunteer and employee related costs</b>				
	Wages & Salaries		335,432	344,554
	Contractors		53,645	20,992
	Other Staff related costs		12,606	3,017
	<b>Total</b>		<b>401,683</b>	<b>368,563</b>
<b>Costs related to providing goods or services</b>				
	Dementia Friendly		3,636	-
	Awareness Services		302,986	575,047
	Information Services		58,513	32,833
	Partnership and Collaboration		283,184	30,554
	Advocacy and Research		33,743	10,880
	Member Support		57,886	55,793
	Board Expenses		25,702	29,094
	Operating Alzheimers NZ expenses		62,177	44,552
	<b>Total</b>		<b>827,827</b>	<b>778,753</b>
<b>Grants and donations made</b>				
	Donations Given		1,500	3,000
	<b>Total</b>		<b>1,500</b>	<b>3,000</b>
<b>Other expenses</b>				
	Depreciation	5	6,949	3,178
	Loss on Disposal of Assets	5	1,656	1,497
	<b>Total</b>		<b>8,605</b>	<b>4,675</b>



## Alzheimers New Zealand Incorporated

### Notes to the Performance Report

#### For the year ended 31 December 2016

#### Note 3: Analysis of Assets

Asset Item	Analysis	2016	2015
<b>Bank accounts and cash</b>			
	Petty Cash	169	195
	BNZ call	205,711	363,443
	BNZ cheque	62,791	52,790
	BNZ NZDC	86,249	132,257
	Kiwibank cheque	82	112
	<b>Total</b>	<b>355,002</b>	<b>548,797</b>
<b>Debtors and prepayments</b>			
	Accounts receivable	11,630	33,772
	Accrued Interest	12,720	12,284
	GST Receivable	49,271	20,026
	Prepaid expenses	9,479	16,567
	<b>Total</b>	<b>83,100</b>	<b>82,649</b>
<b>Investments - Current</b>			
	BNZ Term Deposit 3005	100,000	250,000
	BNZ Term Deposit 3006	300,000	300,000
	BNZ Term Deposit 3007	-	200,000
	BNZ Term Deposit 3008	-	100,000
	BNZ Term Deposit 3009	250,000	-
	Kiwibank Term Deposit 01	110,000	101,767
	Kiwibank Term Deposit 02	-	105,301
	Kiwibank Term Deposit 03	200,000	200,000
	<b>Total</b>	<b>960,000</b>	<b>1,257,068</b>





# **Alzheimers New Zealand Incorporated** **Notes to the Performance Report** **For the year ended 31 December 2016**

<b>Note 4: Analysis of Liabilities</b>		<b>2016</b>	<b>2015</b>
<b>Liabilities Item</b>	<b>Analysis</b>		
<b>Creditors and accrued expenses</b>			
	Accounts payable	36,430	102,805
	BNZ Credit Card	1,562	2,552
	Accrued audit and review fee	7,300	4,500
	Accrued other expenses	2,870	235
	<b>Total</b>	<b>48,162</b>	<b>110,092</b>
<b>Employee costs payable</b>			
	Annual leave accrual	23,292	26,076
	Wages and Salary accrual	-	1,842
	PAYE payable	15,471	16,923
	<b>Total</b>	<b>38,763</b>	<b>44,841</b>
<b>Unused donations grants and bequests with conditions</b>			
	NZ Lotteries	9 80,000	54,617
	Pub Charity	9 -	457,209
	Estate of L Varley	-	410,642
	Estate of W Oldham	-	15,662
	<b>Total</b>	<b>80,000</b>	<b>938,130</b>
<b>Alzheimers Partners Funds to be Distributed</b>			
	Gisborne	11,110	-
	Marlborough	21,681	-
	Nelson	37,916	-
	Northland	43,551	-
	South Canterbury	26,319	-
	<b>Total</b>	<b>7 140,577</b>	<b>-</b>
<b>Income received in Advance</b>			
	Alzheimers Partners	20,000	40,000
	NZDC Contract	-	18,500
	MOH Contract	-	275,054
	Public Trust	-	21,000
	<b>Total</b>	<b>20,000</b>	<b>354,554</b>



**Alzheimers New Zealand Incorporated**  
**Notes to the Performance Report**  
**For the year ended 31 December 2016**

**Note 5: Property Plant & Equipment**  
**This Year**

Asset Class	Opening carrying amount	Purchases	Sales/ (Disposals)	Current year depreciation	Closing carrying amount
Furniture and fixtures	3,613	-	1,656	708	1,249
Office equipment	13,631	7,314	-	6,241	14,704
<b>Total</b>	<b>17,244</b>	<b>7,314</b>	<b>1,656</b>	<b>6,949</b>	<b>15,953</b>

**Last Year**

Asset Class	Opening carrying amount	Purchases	Sales/ (Disposals)	Current year depreciation	Closing carrying amount
Furniture and fixtures	5,033	-	-	1,420	3,613
Office equipment	1,669	14,362	840	1,560	13,631
Library	855	-	657	198	-
Website	-	-	-	-	-
<b>Total</b>	<b>7,557</b>	<b>14,362</b>	<b>1,497</b>	<b>3,178</b>	<b>17,244</b>

**Significant donated assets recorded - source and date of valuation**

nil (2015: nil)

**Significant donated assets - not recorded**

nil (2015: nil)



**Alzheimers New Zealand Incorporated**  
**Notes to the Performance Report**  
**For the year ended 31 December 2016**

**Note 6: Changes in Accumulated Funds**  
**This Year**

Description	Accumulated Surpluses or (Deficits)	Reserves	Total
Opening Balance	347,710	110,431	458,141
Surplus/(Deficit)	162,208	466,204	628,412
Transfer (to)/From Reserves	-	-	-
<b>Closing Balance</b>	<b>509,918</b>	<b>576,635</b>	<b>1,086,553</b>

**Last Year**

Description	Accumulated Surpluses or (Deficits)	Reserves	Total
Opening Balance	318,928	31,965	350,893
Surplus/(Deficit)	28,782	78,466	107,248
Transfer (to)/from Reserves	-	-	-
<b>Closing Balance</b>	<b>347,710</b>	<b>110,431</b>	<b>458,141</b>

**Nature and purpose of each reserve**

**Alzheimers Partners**

is a shared revenue generation initiative managed by Alzheimers NZ.  
The 2016 total reserves represents Alzheimers NZ's share, whereas the 2015 reserves represented all Alzheimers Partners share

	2016	2015
Opening Balance	23,794	-
Plus Surplus/(Deficit)	30,291	23,794
<b>Closing Balance</b>	<b>54,085</b>	<b>23,794</b>

**NZ Dementia Co-operative**

NZ Dementia Co-operative formed a formal relationship with Alzheimers NZ whereby Alzheimers NZ processes financial transactions, enters contracts and holds funds on behalf of the Co-operative which is not a separate legal entity.

Opening Balance	86,637	31,965
Plus Surplus/(Deficit)	(8,808)	54,672
<b>Closing Balance</b>	<b>77,829</b>	<b>86,637</b>

**L Varley Bequest Reserve**

Alzheimers NZ received a bequest to be used to fund research and development of Alzheimers in New Zealand

Opening Balance	-	-
Plus Surplus/(Deficit)	417,350	-
<b>Closing Balance</b>	<b>417,350</b>	<b>-</b>

**W Oldham Bequest Reserve**

Alzheimers NZ received a bequest to be used to fund Alzheimers related activity in Otago/Southland region

Opening Balance	-	-
Plus Surplus/(Deficit)	15,662	-
<b>Closing Balance</b>	<b>15,662</b>	<b>-</b>

**Tagged Grant Reserve**

This reserve is for Grants received that do not have to be refunded but which are held separately as we have this funding tagged to specific expenditure

Opening Balance	-	-
Plus Unspent Tagged Grants	11,709	-
<b>Closing Balance</b>	<b>11,709</b>	<b>-</b>

**Total Reserves**

<b>576,635</b>	<b>110,431</b>
----------------	----------------





# **Alzheimers New Zealand Incorporated** **Notes to the Performance Report** **For the year ended 31 December 2016**

## **Note 7: Alzheimers NZ Partners**

	2016	2015
Donation Income	549,192	275,851
Less Fundraising Expenditure	453,324	350,903
<b>Surplus / (Deficit) before Partner Contributions</b>	<b>95,868</b>	<b>(75,052)</b>
Partner Contributions	75,000	58,846
Alzheimers NZ Contribution	-	40,000
Less Partner Contributions to be distributed	4 (140,577)	-
<b>Total Alzheimers Partners Surplus</b>	<b>30,291</b>	<b>23,794</b>

Alzheimers Partners include Alzheimers NZ, Alzheimers Society Nelson Incorporated, Alzheimers Society South Canterbury Incorporated, Alzheimers Society Gisborne Incorporated, Alzheimers Society Marlborough and Alzheimers Society Northland Incorporated and Alzheimers Northland Trust (jointly).

## **Note 8: New Zealand Dementia Co-operative**

	2016	2015
<b>Income</b>		
NZ Dementia Co-operative Funding	60,891	99,509
Summit/Forum	500	62,158
Donations	6,000	-
Interest	254	108
<b>Total Income</b>	<b>67,645</b>	<b>161,775</b>
<b>Expenditure</b>		
Employment	56,896	54,837
Summit	-	51,419
Website	19,298	-
Fundraising expenses	211	-
Administration	48	847
<b>Total Expenditure</b>	<b>76,453</b>	<b>107,103</b>
<b>Total New Zealand Dementia Co-operative Surplus/(Deficit)</b>	<b>(8,808)</b>	<b>54,672</b>





# **Alzheimers New Zealand Incorporated** **Notes to the Performance Report** **For the year ended 31 December 2016**

## **Note 9: Grants Received**

<b>This Year</b>	<b>Opening Bal</b>	<b>Received</b>	<b>Recognised as Income</b>	<b>Closing Bal</b>
NZ Lotteries 2015	54,617		54,617	-
NZ Lotteries 2016	-	80,000	-	80,000
Pub Charity 2015	457,209	-	457,209	-
Brian Perry Charitable Trust	-	1,000	1,000	-
Nessbank	-	53,000	53,000	-
Freemasons	-	20,000	20,000	-
Freemasons Ponsonby Lodge	-	5,000	5,000	-
<b>Total</b>	<b>511,826</b>	<b>159,000</b>	<b>590,826</b>	<b>80,000</b>

<b>Last Year</b>	<b>Opening Bal</b>	<b>Received</b>	<b>Spent</b>	<b>Closing Bal</b>
Lion Foundation	6,073	-	6,073	-
NZ Lotteries 2014	49,182	-	49,182	-
NZ Lotteries 2015	-	65,000	10,383	54,617
Pub Charity 2014	424,159	-	424,159	-
Pub Charity 2015	-	500,000	42,791	457,209
Four Winds	614	-	614	-
<b>Total</b>	<b>480,028</b>	<b>565,000</b>	<b>533,202</b>	<b>511,826</b>

## **Note 10: Conference**

Alzheimers NZ holds a bi-ennial Conference

	<b>2016</b>	<b>2015</b>
<b>Income</b>		
Registrations	138,068	-
Sponsorship	65,043	-
Exhibitors	14,050	-
Grant funding	114,401	5,000
<b>Less Expenditure</b>		
Conference expenditure	(264,926)	(5,000)
<b>Total Conference Surplus</b>	<b>66,636</b>	<b>-</b>



# Alzheimers New Zealand Incorporated

## Notes to the Performance Report

### For the year ended 31 December 2016

<b>Note 11: Commitments</b>		<b>2016</b>	<b>2015</b>
<b>Commitment</b>	<b>Explanation and Timing</b>		
<b>Office rent</b>	Alzheimers NZ has entered into a 3 year rental lease expiring 31 July 2019. The monthly payment under the lease agreement is \$1,950 + GST		
	In the next year	23,400	8,016
	1 to 5 years in the future	37,050	-
	Over 5 years in the future	-	-
	<b>Total</b>	<b>60,450</b>	<b>8,016</b>
<b>Photocopier</b>	Alzheimers NZ has entered into a 5 year photocopier lease expiring 26 July 2021. The monthly payment under the lease agreement is \$100 + GST		
	In the next year	1,200	-
	1 to 5 years in the future	4,300	-
	Over 5 years in the future	-	-
	<b>Total</b>	<b>5,500</b>	<b>-</b>
	<b>Total Commitments</b>	<b>65,950</b>	<b>8,016</b>
<b>Commitment to provide loans or grants</b>		-	-

#### **Note 12: Contingent Liabilities**

At balance date there were no known contingent liabilities (Last year: nil)

#### **Note 13: Related Party transactions**

Brenda May (board member) was paid \$16,000 during the year for consultancy services. These were provided on ordinary trade terms. (Last year: nil).

There are no amounts due from or to related parties at balance date (Last year: nil)

#### **Note 14: Furnston Estate**

In 1995 Alzheimers New Zealand Incorporated was a recipient of a one-third share of an estate which contained land in England. At that time the land had a nil value. No decisions have yet been made as to whether this land will be retained by Alzheimers New Zealand Incorporated.

#### **Note 15: Events after balance date**

There were no events that have occurred after the balance date that would have a material impact on the Performance Report. (Last year: nil)

#### **Note 16: Other disclosures**

##### **Goods and services provided to the trust in kind**

Alzheimers NZ relies heavily of the generosity of the community both financially and with the amount of donated time from volunteers. Volunteers assist us in enabling us to achieve our outcomes. The amount of volunteer time donated to the trust cannot be valued as there are no equivalent paid positions with the organisation.

##### **Assets used as security for liabilities**

No assets have been used as security for liabilities at reporting date (2015: Nil)



# Independent auditor's report

## To the Members of Alzheimers New Zealand Incorporated

### Opinion

We have audited the accompanying performance report of Alzheimers New Zealand Incorporated on pages 27 to 42, which comprises the entity information, the statement of service performance, the statement of financial performance and statement of cash flows for the year ended 31 December 2016, the statement of financial position as at 31 December 2016, and the statement of accounting policies and notes to the performance report.

In our opinion:

- a) the reported outcomes and outputs, and quantification of the outputs to the extent practicable, in the statement of service performance are suitable
- b) the accompanying performance report presents fairly, in all material respects:
  - the entity information for the year then ended
  - the service performance for the year then ended, and
  - the financial position of Alzheimers New Zealand Incorporated as at 31 December 2016, and its financial performance, and cash flows for the year then ended in accordance with Public Benefit Entity Simple Format Reporting – Accrual (Not-For-Profit) issued by the New Zealand Accounting Standards Board.

### Basis for Opinion

We conducted our audit of the statement of financial performance, statement of financial position, statement of cash flows, statement of accounting policies and notes to the performance report in accordance with International Standards on Auditing (New Zealand) (ISAs (NZ)), and the audit of the entity information and statement of service performance in accordance with the International Standard on Assurance Engagements (New Zealand) ISAE (NZ) 3000 (Revised). Our responsibilities under those standards are further described in the 'Auditor's responsibilities for the audit of the performance report' section of our report.

We are independent of Alzheimers New Zealand Incorporated in accordance with Professional and Ethical Standard 1 (Revised) 'Code of ethics for assurance practitioners' issued by the New Zealand Auditing and Assurance Standards Board, and we have fulfilled our other ethical responsibilities in accordance with these requirements.

We believe that the audit evidence we have obtained is sufficient and appropriate to provide a basis for our opinion.

Other than our capacity as auditor we have no relationship with, or interests in, Alzheimers New Zealand Incorporated.

### The responsibility of the Board for the performance report

The Board are responsible for:

- a) Identifying outcomes and outputs, and quantifying the outputs to the extent practicable, that are relevant, reliable, comparable and understandable, to report in the statement of service performance
- b) the preparation and fair presentation of the performance report on behalf of Alzheimers New Zealand Incorporated which comprises:
  - the entity information
  - the statement of service performance; and
  - the statement of financial performance, statement of financial position, statement of cash flows, statement of accounting policies and notes to the performance report in accordance with Public Benefit Entity Simple Format Reporting – Accrual (Not-For-Profit) issued by the New Zealand Accounting Standards Board, and
- c) for such internal control as the Board determine is necessary to enable the preparation of the performance report that is free from material misstatement, whether due to fraud or error.

In preparing the performance report, the Board are responsible on behalf of Alzheimers New Zealand Incorporated for assessing Alzheimers New Zealand Incorporated's ability to continue as a going concern,



disclosing, as applicable, matters related to going concern and using the going concern basis of accounting unless the Board either intend to liquidate Alzheimers New Zealand Incorporated or to cease operations, or have no realistic alternative but to do so.

#### **Auditor's responsibilities for the audit of the performance report**

Our objectives are to obtain reasonable assurance about whether the performance report is free from material misstatement, whether due to fraud or error, and to issue an auditor's report that includes our opinion. Reasonable assurance is a high level of assurance, but is not a guarantee that an audit conducted in accordance with ISAs (NZ) and ISAE (NZ) 3000 (Revised) will always detect a material misstatement when it exists. Misstatements can arise from fraud or error and are considered material if, individually or in the aggregate, they could reasonably be expected to influence the decisions of users taken on the basis of the performance report.

As part of an audit in accordance with ISAs (NZ) and ISAE (NZ) 3000 (Revised), we exercise professional judgement and maintain professional scepticism throughout the audit. We also:

- Identify and assess the risks of material misstatement of the performance report, whether due to fraud or error, design and perform audit procedures responsive to those risks, and obtain audit evidence that is sufficient and appropriate to provide a basis for our opinion. The risk of not detecting a material misstatement resulting from fraud is higher than for one resulting from error, as fraud may involve collusion, forgery, intentional omissions, misrepresentations, or the override of internal control.
- Obtain an understanding of internal control relevant to the audit in order to design audit procedures that are appropriate in the circumstances, but not for the purpose of expressing an opinion on the effectiveness of Alzheimers New Zealand Incorporated internal control.
- Evaluate the appropriateness of accounting policies used and the reasonableness of accounting estimates and related disclosures made by management.
- Conclude on the appropriateness of the use of the going concern basis of accounting by the Alzheimers New Zealand Incorporated and, based on the audit evidence obtained, whether a material uncertainty exists related to events or conditions that may cast significant doubt on Alzheimers New Zealand Incorporated ability to continue as a going concern. If we conclude that a material uncertainty exists, we are required to draw attention in our auditor's report to the related disclosures in the performance report or, if such disclosures are inadequate, to modify our opinion. Our conclusions are based on the audit evidence obtained up to the date of our auditor's report. However, future events or conditions may cause Alzheimers New Zealand Incorporated to cease to continue as a going concern.
- Evaluate the overall presentation, structure and content of the performance report, including the disclosures, and whether the performance report represents the underlying transactions and events in a manner that achieves fair presentation.
- Perform procedures to obtain evidence about and evaluate whether the reported outcomes and outputs, and quantification of the outputs to the extent practicable, are relevant, reliable, comparable and understandable.

We communicate with the Board regarding, among other matters, the planned scope and timing of the audit and significant audit findings, including any significant deficiencies in internal control that we identify during our audit.

This report is made solely to the members of Alzheimers New Zealand Incorporated. Our audit has been undertaken so that we might state to the members those matters we are required to state to them in an auditors' report and for no other purpose. To the fullest extent permitted by law, we do not accept or assume responsibility to anyone other than the members, for our audit work, for this report, or for the opinions we have formed.



**Moore Stephens Wellington Audit** | Qualified Auditors, Wellington, New Zealand  
8 April 2017



# Our team

**Alzheimers NZ wishes to thank all those who supported our work during 2016. We are extremely grateful for the time and practical and financial support we receive from volunteers, donors, grant and other funding bodies and the Government.**

## Board members

Ngaire Dixon, Chair  
(Chair since September 2016)

Susan Hitchiner, Chair  
(until September 2016)

Mary Slater  
(since June 2016, Vice Chair)

Wayne Fletcher  
(since August 2016, Vice Chair)

Jan White  
(Vice Chair until June 2016)

Brenda Wraight  
(since December 2016)

Dave Paddon

Dianne Stokes

Dianne Johnson  
(until October 2016)

Emma Thompson  
(until May 2016)

Liam Butler  
(until May 2016)

Lyneta Russell  
(since August 2016)

Karen Foster  
(until June 2016)

## Alzheimers NZ staff

Chief Executive, Catherine Hall

Clinical Advisor, Anne Schumacher  
(until May 2016)

Office Manager, Ken Drayton

Policy Advisor, Lisa Beech  
(since November 2016)

Senior Communications Advisor, Uli Trute

## Volunteers

Glenys Blair

Kirsty Robinson

Stephen Lungley

# Our team

## Honorary Legal Advisor

Sam Perry of Brandons, Wellington

## Consumer Advisory Group

Brian Paterson

Dave Paddon

Jane Butler

Jill Kearn

Karen Gillies

Murray Smith (until December 2016)

Nigel Wynn

Rose Love

Tania Wynn

## Clinical and Scientific Advisory Group

Dr Chris Collins

Dr David Kerr

Dr Matthew Croucher

Dr Maurice Curtis

Dr Michal Boyd

Dr Phil Wood

Sir Richard Faull

# Thank you

## Our supporters

We would like to thank the following organisations for supporting us financially or in other ways during 2016:

### Our sponsor



### Our corporate partners



### Our supporters (non-financial)



### Our funders



**Nessbank  
Trust**



# Thank you

## Our donors

Our work would not be possible without those who kindly and generously make donations to support people affected by dementia throughout the year – both those who give regularly and those who choose to make a one-off donation or a bequest. Thank you. We appreciate your support.

## Our volunteers

We would like to acknowledge all the willing volunteers who shared their time and skills with us and our Members in 2016, including those who joined the Memory Walks around the country.

## Our expert advisors

We would like to thank the following people for offering their expertise, knowledge and time on a voluntary basis:

- the members of our Clinical and Scientific Advisory Group
- our Consumer Advisory Group
- our Legal Advisor, Sam Perry of Brandons
- Tony Teesdale, employment law specialist

## Our champions for dementia

Kate De Goldi

Colin Mathura-Jeffree

Kerry Prendergast

Reuben Thorne

## Life members

Brenda Cromie

David Ansell

Gaynor Duff

Jimmy Fisher

Judy Cooper

Kate Clark  
(passed away 23 November 2016)

Nigel Wynn

Verna Schofield

Wendy Fleming

Wilma Bulman

*Kate Clark passed away on 23 November 2016. She was the first person with dementia to be appointed to the Board of Alzheimers NZ, after being diagnosed with early onset Alzheimer's Disease at the age of 52. Kate served on the Board from 2006 until 2009.*



# Thank you

## Our members

### **Alzheimers Eastern Bay of Plenty**

Professionals Building, Units B and C,  
38 Landing Road, Whakatane 3120  
(07) 308 0525  
alzheimereasternbayofplenty@xtra.co.nz

### **Alzheimers Gisborne**

Morris Adair Building, Gisborne Hospital,  
Ormond Rd, Gisborne 4010  
(06) 867 0752  
gisborne.alzheimers@xtra.co.nz

### **Alzheimers Manawatu**

Marion Kennedy Centre  
642 Featherston Street  
Palmerston North 4414  
(06) 357 9539 and (06) 357 9543  
manawatu@alzheimers.org.nz

### **Alzheimers Marlborough**

8 Wither Road, Blenheim 7201  
(03) 577 6172  
alzheimersmarlb@xtra.co.nz

### **Alzheimers Nelson**

319 Hardy Street  
Nelson, 7010  
(03) 546 7702  
nelson.alzheimers@xtra.co.nz

### **Alzheimers Northland**

148 Corks Road  
Whangarei  
(09) 438 7771 Whangarei  
(09) 407 3010 Kerikeri  
(09) 408 1123 Kaitia  
northland@alzheimers.org.nz

### **Alzheimers Otago**

Community House  
283-301 Moray Place, Dunedin 9016  
(03) 471 6154 Dunedin  
(03) 448 9056 Central Otago  
(03) 434 9090 North Otago  
adards.otago@xtra.co.nz

### **Alzheimers Rotorua**

Level 1 Community Health Hub  
1172 Haupapa Street  
PO Box 645  
Rotorua 3010  
(07) 349 0053  
alzheimersro@xtra.co.nz

### **Alzheimers South Canterbury**

Room 11, Community House,  
27 Strathallan Street, Timaru 7910  
(03) 687 7583  
southcanterbury@alzheimers.org.nz

# Thank you

## Our members continued

### **Alzheimers Southland**

135 Yarrow Street  
Invercargill 9810  
(03) 214 0984  
alzheimers.southland@xtra.co.nz

### **Alzheimers Taranaki**

Office 9, Powderham Business Centre  
117 Powderham Street  
New Plymouth 4310  
(06) 769 6916  
alzheimers.taranaki@xtra.co.nz

### **Alzheimers Taupo**

Waiora House,  
Kaimanawa St,  
Taupo 3330  
(07) 377 4330  
alzheimers.taupo@vodafone.co.nz

### **Alzheimers Tauranga**

116, 13th Avenue  
Tauranga 3112  
(07) 577 6344  
tauranga@alzheimers.org.nz

### **Alzheimers Wairarapa**

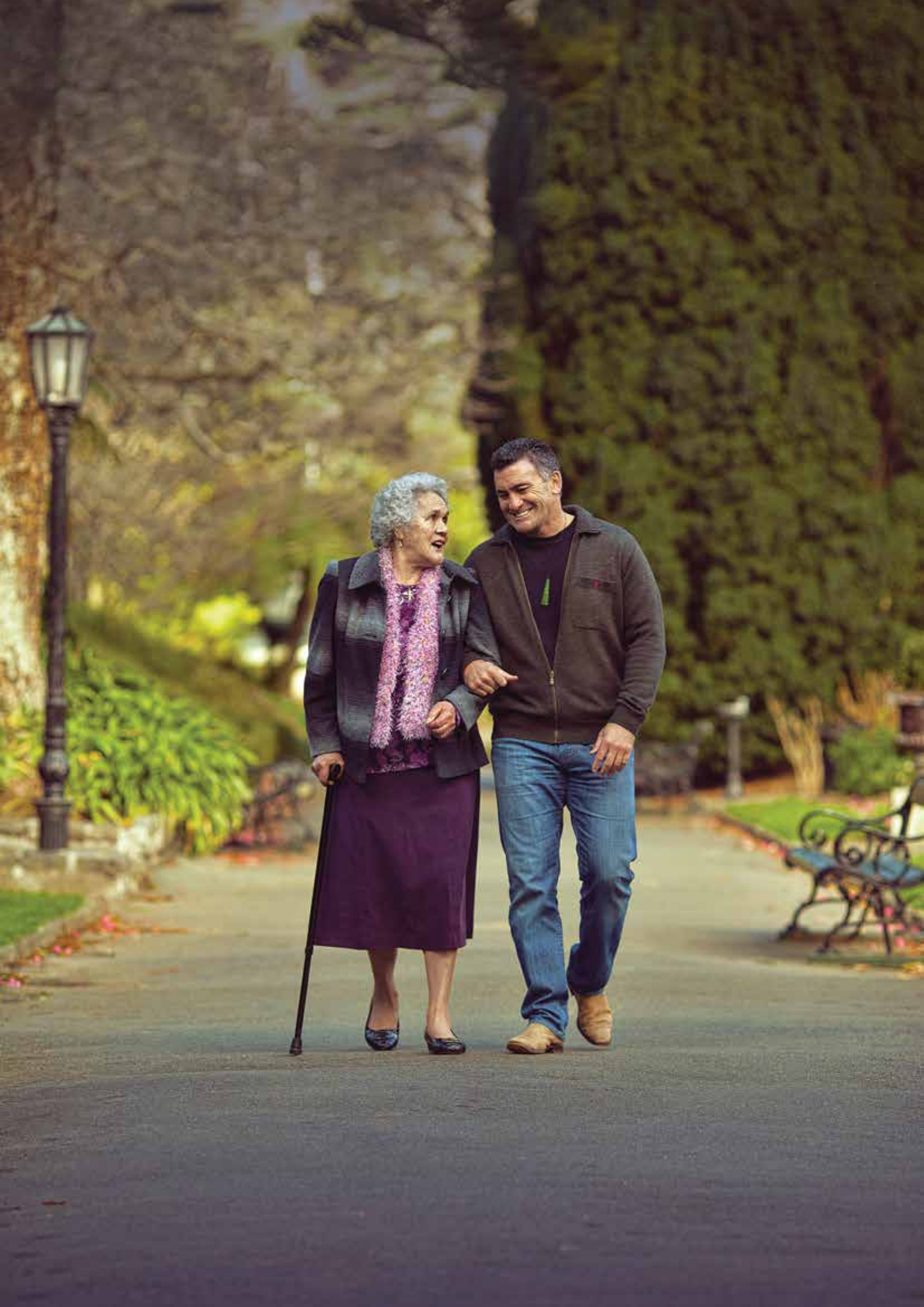
Solway Showgrounds  
Doug Lamb Building  
Cnr York and Fleet Streets  
Masterton 5810  
(06) 377 7522  
alz2.wairarapa@gmail.com

### **Alzheimers Whanganui**

Suite 5, 136 Victoria Ave  
Wanganui  
(06) 345 8833  
alzheimers.wang@xtra.co.nz

### **Alzheimers Wellington**

55 Hutt Road  
Petone 5012  
Wellington  
(04) 939 0133  
wellington@alzheimers.org.nz





**Alzheimers NZ**

PO Box 11288

Manners Street Post Shop

Wellington 6142

New Zealand

**P: 04 387 8264**

**E: [admin@alzheimers.org.nz](mailto:admin@alzheimers.org.nz)**

**W: [www.alzheimers.org.nz](http://www.alzheimers.org.nz)**

Charity registration CC 21026